



INSIGHT
ENGLISH
ACADEMY



Why Insight?

Real-Life Language Experience

Learn by doing and have practical outcomes. Build the motivation and confidence you need in everyday English.

Community and Relationships Building

Connect with locals through our networking and social events, visit cool places and open doors for your future career.

Personal Growth

We get that this is more than just English. Reignite your creativity and gain the tools you need to build goals and have a happier & more prosperous life.

Pronunciation & Communication Program

Our speech therapist will guide you to improve your pronunciation, vocabulary, and phonetics to speak English fluently and confidently.

Professional Development

Develop emotional intelligence, personal branding, collaboration and other soft skills to succeed professionally and overcome fear. Participate in a safe space to test your ideas, gain feedback and prepare to prosper.

More Than Just 'Teachers'

Our teachers are a selected group of industry leaders, professional speech therapists and coaches with life experience & unique knowledge.

Life Happens

Starting a life in a new country can be uncertain! Life Happens is a program led by one of our life coaches designed to help you with the daily challenges you might deal with.



Who Are We?

We are an eclectic team of creative entrepreneurs and academics who believe that teachers and traditional classes are insufficient. Instead, we believe in real-world experiences. Our vision is to give students the skills, mindset and knowledge they will need to adapt and succeed in this dynamic and competitive global market.

Insight Academy is a place to thrive by collaborating, building community and networking. We offer genuine outcomes and valuable life experiences, which is the reason why Insight Academy has quickly become legendary as one of Melbourne's most vibrant development hubs.

Are you ready to join the community?

Your Confidence Journey Starts Here

You're the hero of this adventure, navigating through a series of exciting levels where you'll face real-world challenges, defeat big bosses, and level up your English skills, confidence, and employability. Along the way, you'll be guided by Helpers at each stage, ensuring you're equipped for success beyond the classroom. Insight Academy takes you further, teaching you essential English skills and adding a powerful layer of career-focused learning that will set you apart.



- » **Street-Smart Language Skills**
- » **Confidence Coaching**
- » **Positive Psychology**
- » **Networking**



Level-Up Your English

When you feel confident, you can make more friends, find better jobs and get the most out of your overseas adventures - but confidence has to be built through experience. Level up your confidence with practical tips, real-life scenarios, intercultural communication, soft skills for the workplace and enhance your employability. Practical challenges to push you outside your comfort zone, and to improve your street-smart English.

Street Smart Language Upskill

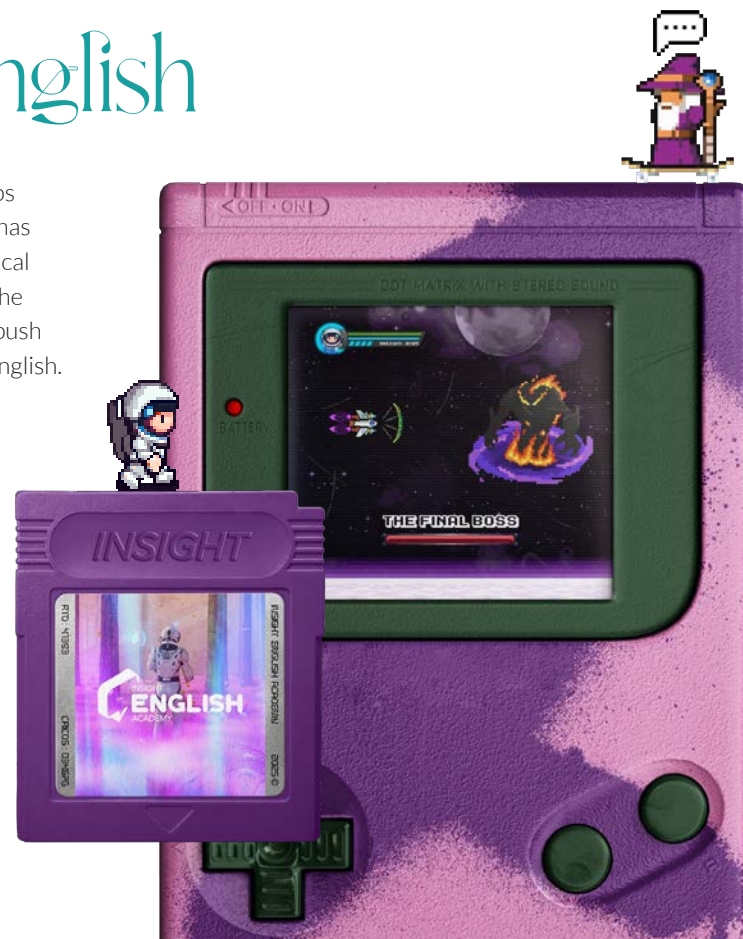
Not Book Smart! Absorb the world around you through natural language, real people, and authentic experiences.

Real-Life Challenges

Learn by doing! Through challenges and activities, you will build the motivation and confidence you need in your everyday English.

Confidence Coaching

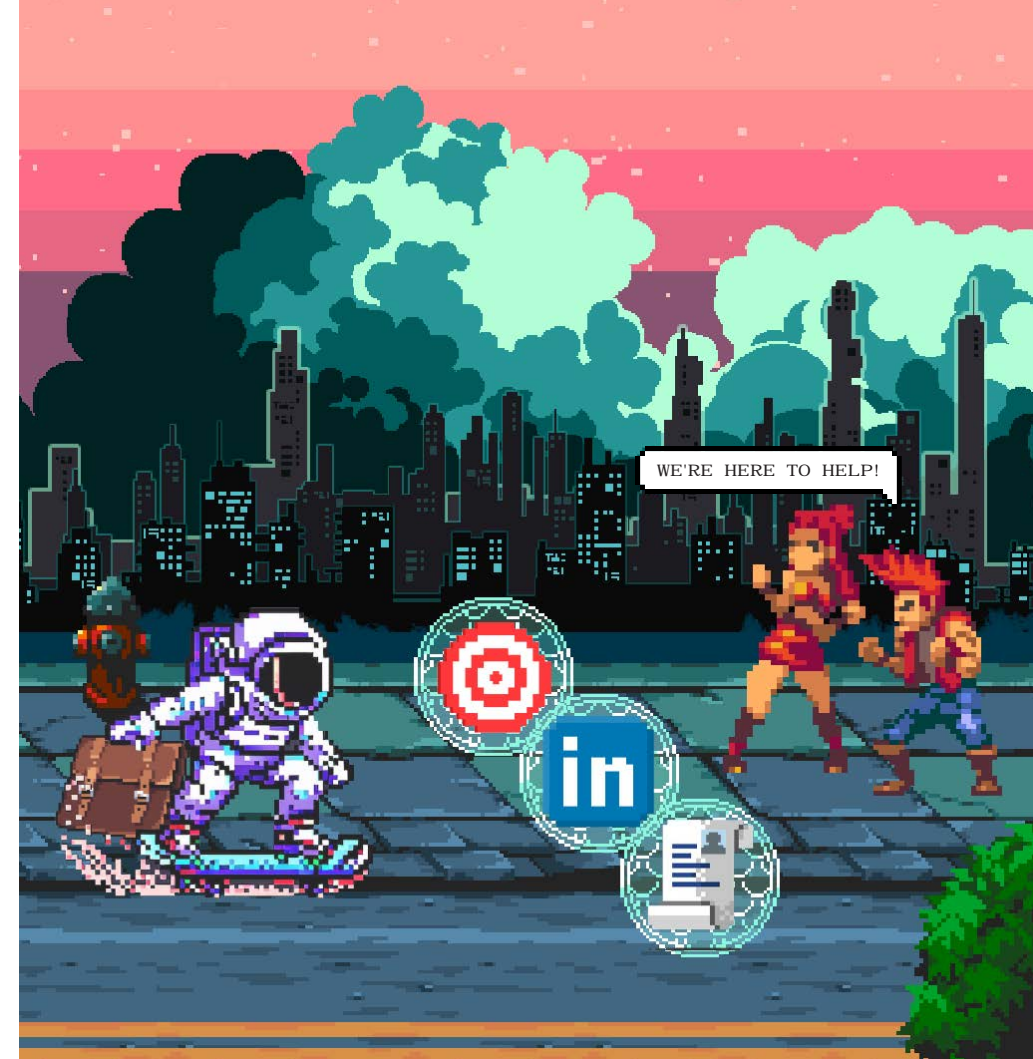
Overcome shyness and a lack of self-esteem using English. Rise above your own limits and fear of speaking to communicate confidently.



Real Classes. Real Feedback. Real Results.

We've seen how the world and workplace are changing rapidly, while the classroom stays still. Motivated to bring a change, we utilise cutting-edge methodologies to improve how we teach, ensuring that your learning experience is more than just an English class.

Leave your comfort zone behind and dive into real-world practice with a unique learning experience designed to boost your skills and confidence, laying a strong foundation for success in today's fast-paced & competitive world.





Our Street-Smart Programs

General English | IELTS | Cambridge | PTE





General English

CRICOS Course Code: 108663H

Intakes: Every Monday

Levels: Elementary, Pre-Intermediate, Intermediate, Upper-Intermediate

Real classes. Real feedback. Real results.

This program will improve your English level whilst building your confidence and language foundations to succeed in this dynamic and competitive world.

Get ready for the challenge of getting out of your comfort zone and learning English with experienced professionals through real-life practice. Are you ready to become the best version of yourself and build valuable relationships for your future?

Pronunciation



Speaking & Listening



Grammar



Vocabulary



Writing & Reading



Intercultural Communication



Weekly Testing



Presentations



Course Features

- » Hands-on Experience and Real-life Lessons
- » Practical Weekly Challenges
- » Critical Thinking
- » Personal Development and Mindfulness
- » Business and Career Themes



Confidence Coaching

Overcome shyness and a lack of self-esteem using English. Move beyond limiting beliefs and fear of speaking to communicate in any part of the world.



Positive Psychology and Mindfulness

Stimulate your creativity and get the tools to build goals and have a happier, more prosperous and more content life.



Gamification

Learn by doing! Through action, you will build the motivation and confidence you need in your everyday English.





IELTS Test Preparation

CRICOS Course Code: 108665F

Intakes: Every Monday

Levels: Upper-Intermediate

Is your goal to apply for a work visa or study in an English-speaking country?

This program prepares you to gain your best possible score in IELTS (International English Language Testing System) and study at an English-speaking university in Australia or apply for a work visa in an English-speaking country.

In addition to providing skills to succeed in getting the desired score, our expert mentors provide support to aim for other relevant skills needed in Australia's higher education and workspaces.

Pronunciation



Grammar



Speaking & Listening



Vocabulary



Course Features

- » Experienced and energetic mentors.
- » Unique confidence tips & personalized student feedback.
- » Complete test training and help with your test weaknesses. Comprehensive vocabulary training on the most common topics tested in IELTS.
- » Academic and General IELTS test topics covered.
- » Detailed test tips, with weekly practise tests under real exam conditions.

Writing & Reading



Intercultural Communication



Weekly Testing



Presentations



Community

Connect with a community that will give you the best advice beyond your IELTS test.



More Than a Course

Get other skills to up-level your English from professional speech therapists and professional coaches.



Active Participation

Regular practice and personalised feedback from our professional mentors.





Cambridge Exam Preparation

CRICOS Course Code: 108664G

Q: Why do a test such as FCE (B2) with Cambridge?

Answer: It is the most popular Cambridge exam and is accepted by thousands of businesses & educational institutions worldwide. It is also a significant stepping-stone to greater fluency in English.

This program is an intensive course designed to help Upper-Intermediate level students prepare for Cambridge testing at a B2 level. It is also suitable for those planning to uplevel and do the CAE test in the future.

Pronunciation



Grammar



Speaking & Listening



Vocabulary



Course Features

- » Thorough exam preparation classes & personalized student feedback.
- » Experienced and energetic mentors.
- » Confidence boosting tips to improve your test results.
- » Weekly partial practice tests & monthly full practice tests.
- » Option to choose to do the formal FCE test upon completion of the course, and Cambridge test certificates are valid for life.

Writing & Reading



Intercultural Communication



Weekly Testing



Presentations



Active Participation

Regular practice and personalised feedback from our professional mentors.



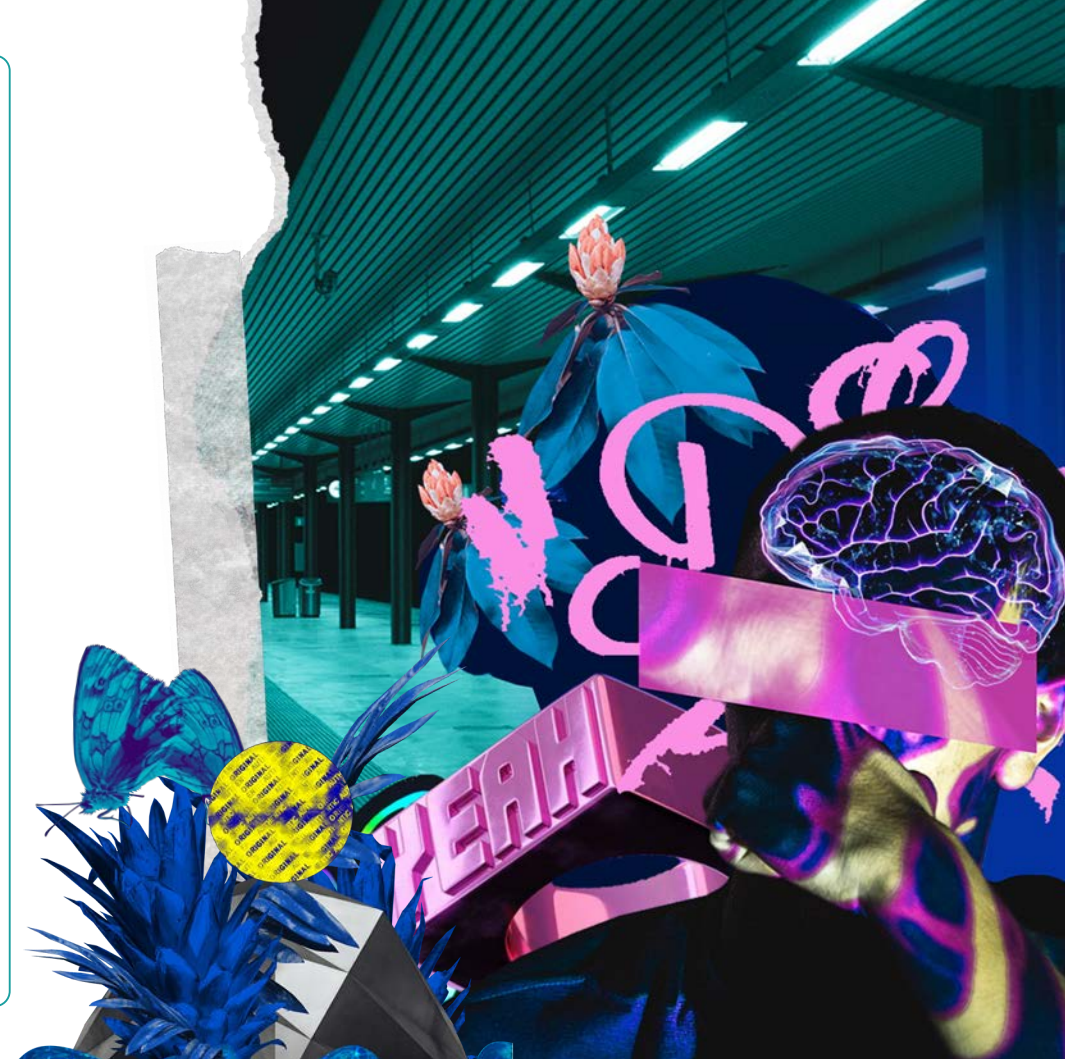
Exam Simulation Sessions

Reduce your nerves & build resilience to do well under exam conditions.



More Than a Course

Connect with a community that gives you opportunities to up-level skills from industry leaders, professional speech therapists & coaches.





PTE Exam Preparation

Exam practice, tips and tricks to ace your exam!

Students often spend months retaking the PTE, feeling frustrated and stuck. This course is designed to shortcut the process, giving test-takers the winning strategies to pass with confidence—and move forward with their dreams.

This course helps you fast-track your PTE preparation with winning strategies to pass confidently. Designed by PTE experts, it covers all test sections—speaking, writing, listening, and reading—through targeted practice, personalised feedback, and expert guidance, helping you reach your full potential and achieve your goals faster.

Duration: 2 weeks
(18hrs of class + unlimited access to mock tests)

Frequency: 3 days a week

Timing: 6pm - 9.15pm

Be Ready. Be Confident.

- » **Unlimited Mock Tests:** Practice with unlimited mock exams that feel just like the real PTE test.
- » **Personalised Feedback:** One-on-one feedback sessions to help you focus on your strengths and improve your weak spots.
- » **Comprehensive Materials:** Access all the resources you need, including free templates for Speaking, Writing, and Listening.
- » **Real-Life Scenarios:** Learn with real-world examples to make your lessons practical and relatable.
- » **The Smart Way To Learn:** Focusing on proven techniques to maximise results with less stress.
- » **Save Money & Time:** Avoid multiple attempts by being prepared with clear, practical strategies to pass with confidence.



Real Exam Experience

Get comfortable with the PTE interface using software that simulates the actual exam.



Collaborative Learning

Stay motivated and engaged by working together in a supportive environment.



Smart Technology

Use online tools, apps, and interactive resources to keep learning outside of class.



Student Activities

We invest in creating student experiences!

Using language in the classroom has its limitations. That's why we create experiences for our students to get out in the world and use what they've learned!

Put your English skills to work while exploring the city in one of our exploration challenges, including visits to the Melbourne Night Market, Moomba Festival, National Gallery of Victoria and more.

We also host a variety of events to create an incredible student experience such as cultural days, talent performances, student parties, markets and more.

Our students are also welcome to attend any event at our **Academy of Sustainable Business & Innovation**, including networking events and industry professional guest speakers covering a wide range of areas in business and life.



Insight Magazine

By Students, For Students

Insight Magazine is a project designed to reflect the diverse perspectives and creativity of our class while creating engaging and creative content. This project is designed to help you develop your English skills in a real-world context while fostering teamwork, critical thinking, and problem-solving abilities.

Every student will contribute as a writer, but you will also take on additional roles essential to the magazine's success. These roles range from editing and design to marketing and event planning. Work collaboratively as a team and gain hands-on experience, developing skills that are valuable in both academic and professional settings.

Through this project, you will learn to manage tasks, meet deadlines, and produce high-quality content. By the end of the project, you will have created a full issue of a magazine you can be proud of and have gained valuable experience in the process.



Bonus Support

Upskill yourself with our complementary sessions and coaching programs every week. These aren't just extra-curricular activities, these are designed specifically to support you in practical ways outside of the classroom to help you navigate life and language.

Employability Skills & Networking Workshop

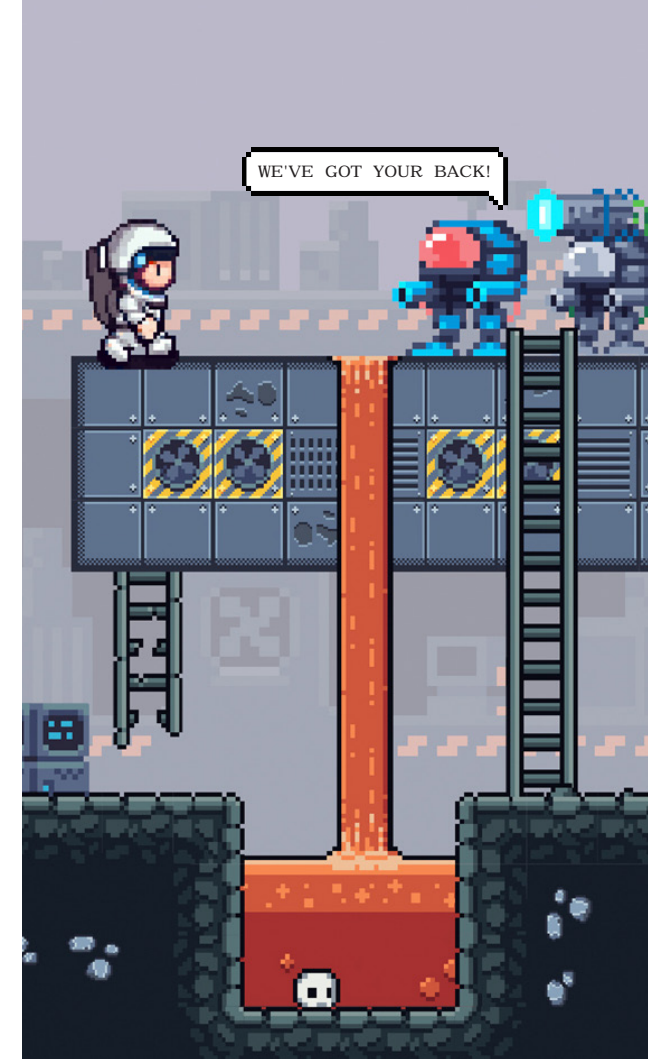
This is the perfect opportunity to prepare yourself for the job hunt process. Get professional coaching from our mentors and participate in our personal branding and employment advice sessions that would help you increase your professional opportunities.

Street Smart English - Communication Workshop

Want to improve your English speaking skills in a fun and relaxed environment? Our ELICOS Conversation Club, led by a teacher, is the perfect place to practice! Meet new friends, engage in lively discussions, and build your confidence in real-life conversations.

Pronunciation Workshop

Unlock your speaking potential with our free pronunciation workshop! This interactive session helps you refine clarity, fluency, and confidence. Perfect for all levels; gain valuable insights and techniques to enhance your pronunciation.



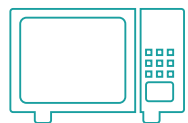
Your Campus

We are conveniently located in the heart of Melbourne's CBD, in a lively and vibrant area with fantastic restaurants, stores, cafes, and the best shopping Melbourne offers. You are also only minutes away from public transportation, major tourist attractions, and various art galleries.

Campus Facilities



Laptops*



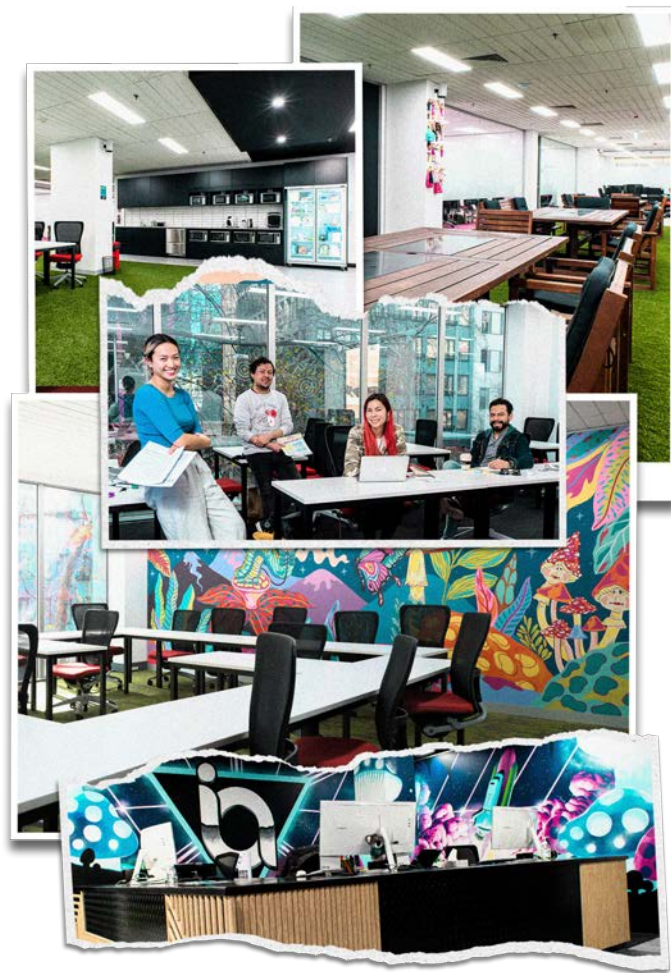
Kitchen Facilities



Free Wi-Fi



Private Study Spaces



Our new Insight English Academy campus was built from scratch, custom tailored for the Insight experience from top to bottom.

With 13 uniquely themed classrooms, large open floor community area, fully equipped kitchen facilities, lightning fast Wi-Fi and disability-friendly facilities; we promise you there's nowhere like Insight.

- » Experienced and energetic teachers
- » Highly interactive sociable classes
- » Strong speaking focus
- » Weekly testing and teacher counselling
- » Timetable options to suit your needs
- » Detailed teaching of vocabulary, grammar, listening, speaking, reading and writing



Entry Requirements

Insight English Academy entry requirements are specific per course. Please check below for the requirements that apply to you.

General English

- Must be 18 years of age or over at the time of commencement.
- Completing an English placement test prior to the commencement of classes, in order to assess the entry level.

IELTS Test Preparation

- Must be 18 years of age or over at the time of commencement.
- Completing a placement test prior to the commencement of classes, demonstrating a minimum current English level of IELTS 5.0 equivalent.

Cambridge Exam Preparation

- Must be 18 years of age or over at the time of commencement.
- Completing a placement test prior to the commencement of classes, demonstrating a minimum current English level of IELTS 5.5 equivalent.

Flexible Timetable

Our classes are available in three blocks throughout the day to offer greater flexibility to attend other activities and work with your schedule. We will place you in a class based on your English level, background and class size so that you develop the skills you need to speak English with confidence.

Morning Classes:

Monday - Friday | 8:00am – 12:30pm

For early birds maximising their days and working in the evenings.

Evening Classes:

Monday - Friday | 5:15pm – 9:30pm

For workers of the day and the night owls.

NEW Compressed 2.5 Day Timetable:

Monday + Tuesday | 8:00am – 12:30pm

Wednesday | 8:00am – 12:30pm

For those who thrive on flexibility and seek to maximize both their learning and free time.

What Your Week Might Look Like...

A sample of the timings and lessons taught in our different programs.

MONDAY	TUESDAY	WEDNESDAY	THURSDAY	FRIDAY
Mindfulness	Mindfulness	Mindfulness	Mindfulness	Mindfulness
Revision for the Test Test	Grammar Point A Interview Another Class	Grammar Point B Listening & Song Lyric Analysis	Revision (Grammar Point A) Pronunciation Focus	Revision (Grammar Point B) Confidence Coaching
RECHARGE BREAK				
Speaking Practice & New Vocabulary Language-Improvement Game	Listening Practice & New Vocabulary Critical Thinking While Reading	Writing Practice & Vocabulary Revision Public Speaking Skills	Excursion: Gallery Visit Make A Social Media Video	Reading Practice & Vocabulary Revision Real-World Challenge: Street Interviews

*example of standard morning/evening timetable and subject to change, please confirm with Insight Academy in advance.

Mindfulness

Every day starts with a mindfulness exercise to help us set the tone for the day, stay centered and present.

Excursions

Explore new places and sharpen your language skills through communicating in organic situations.

Real-World Challenges

Get out of the classroom and test what you’ve learned in the streets. Who knows what you’ll run into!





Melbourne Australia.



Welcome to Melbourne

Café Culture • European-Style City • Yarra River
Safe & Clean • Live Music • Work Opportunities
Fantastic Restaurants • Designer Shopping
Vibrant Nightlife • Beautiful Beaches

Besides being consistently ranked as the most liveable city in the world, Melbourne is also Australia's style capital and is home to some of the best food, dining, bars and live music in the world. It is one of Australia's top destinations for international students and is a truly multicultural city.

Melbourne is a welcoming, outgoing, and confident city in terms of its people's generosity and inclusiveness. This spirit embraces change while honouring heritage; celebrates diversity while sharing a common sense of place and pride; and aspires to a prosperous, lively and peaceful future. Melbourne's free and open nature allows people to be themselves and find places where they are accepted and welcome.



Come to Australia Meet the World

Our home is in Australia, and we love it! This country offers so many unique experiences and places to discover. The Aussie lifestyle is the world's envy, and with such a diverse population, there is something for everyone. Australia is known for its diversity and multiculturalism, landscapes, tropical islands, the rugged outback as well as its cities - each with their own unique culture and personality.

The country offers diversity, multiculturalism, affordability, quality of life, and employment opportunities to hundreds of thousands of international students every year! The world's best minds are some of these former international students.

Why wouldn't you want to study with some of the best minds in the world?!





Cost of Living in Melbourne

This table shows the estimated monthly costs of goods & services in Australia that you are likely to need. The cost of living in Melbourne is significantly cheaper than in Sydney, mostly due to the cost of housing.

Cost Per Month	Approx. \$AUD
Accommodation	\$560 – \$1,080
Utilities for a small apartment (Electricity, heating, water, etc)	\$220
Public Transportation	\$40 – \$160
Phone and/or Internet	\$40 – \$100
Gym Membership	\$15 – \$40
Groceries	\$80 – \$260
Per Item	
Meal at a Restaurant	\$15 – \$40
Coffee (Melbournians love coffee!)	\$1 – \$5
Glass of Beer/Wine	\$6 – \$12

Information provided current as of April 2023. Sources: <https://uniacco.com/blog/cost-of-living-in-melbourne> and <https://www.unilodge.com.au/blog/the-cost-of-living-in-melbourne-as-a-student>

Homestay Support

We offer homestay support upon request. This program unique opportunity to live with a welcoming and friendly Australian host family. You'll get to experience the local culture and customs firsthand while also having a safe and comfortable place to call home.

We understand that moving to a new country can be overwhelming, but our host families are here to provide you with a supportive environment to help you settle in and make the most of your time in Melbourne. They'll be happy to share their local knowledge with you and help you get to know the city and its surroundings.

Our homestay accommodation is also a great way to practice your English language skills and improve your communication abilities. You'll have plenty of opportunities to speak with your host family and practice your language skills in a natural setting.





Insight English Academy by Insight Academy



www.insightacademy.edu.au

+61 3 8609 7430

startup@insightacademy.edu.au

Level 2, 399 Lonsdale Street,
Melbourne, VIC 3000, Australia



SCAN ME



RTO: 41393 CRICOS: 03467G

Version 1.030723